



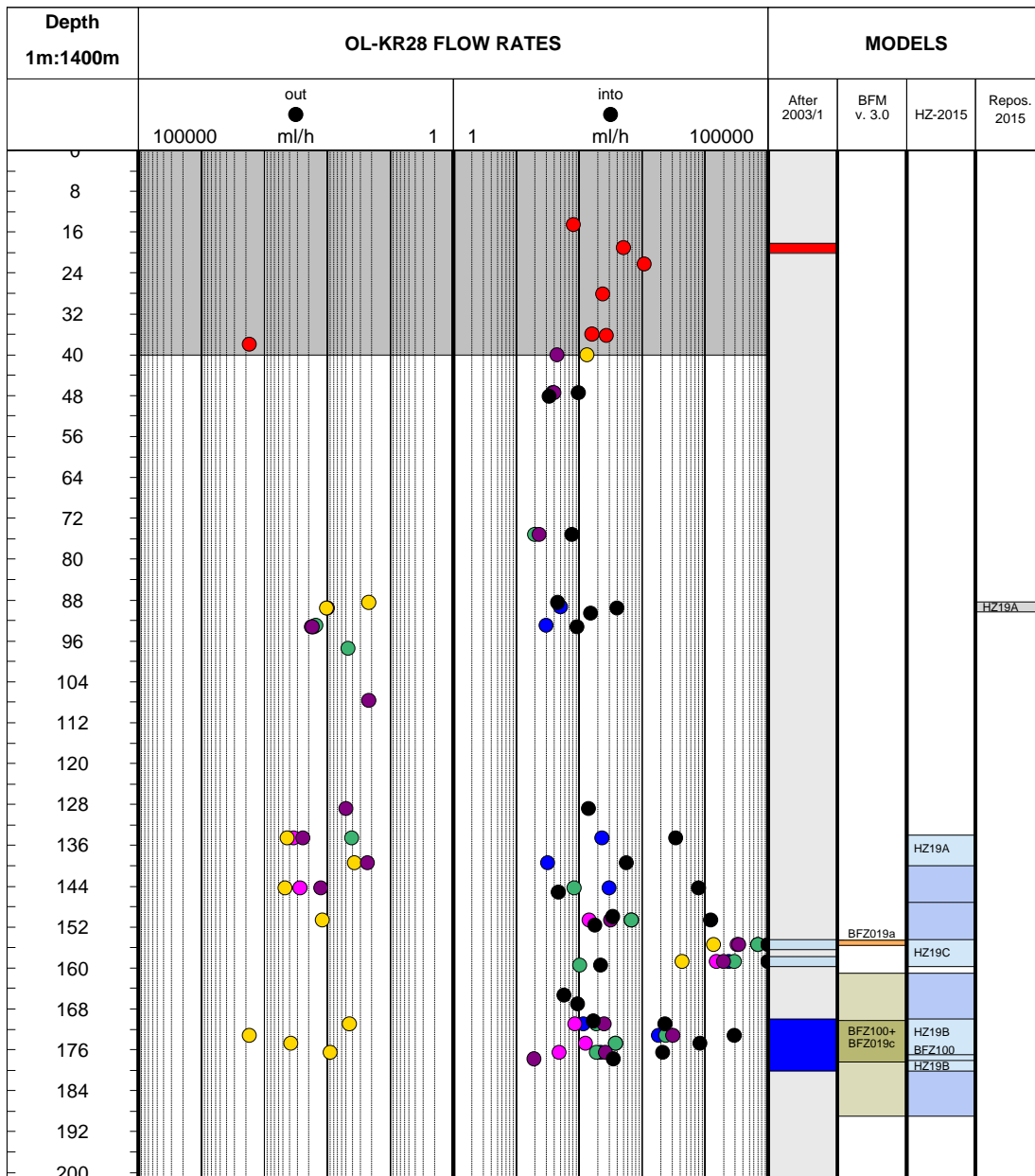
■ casing

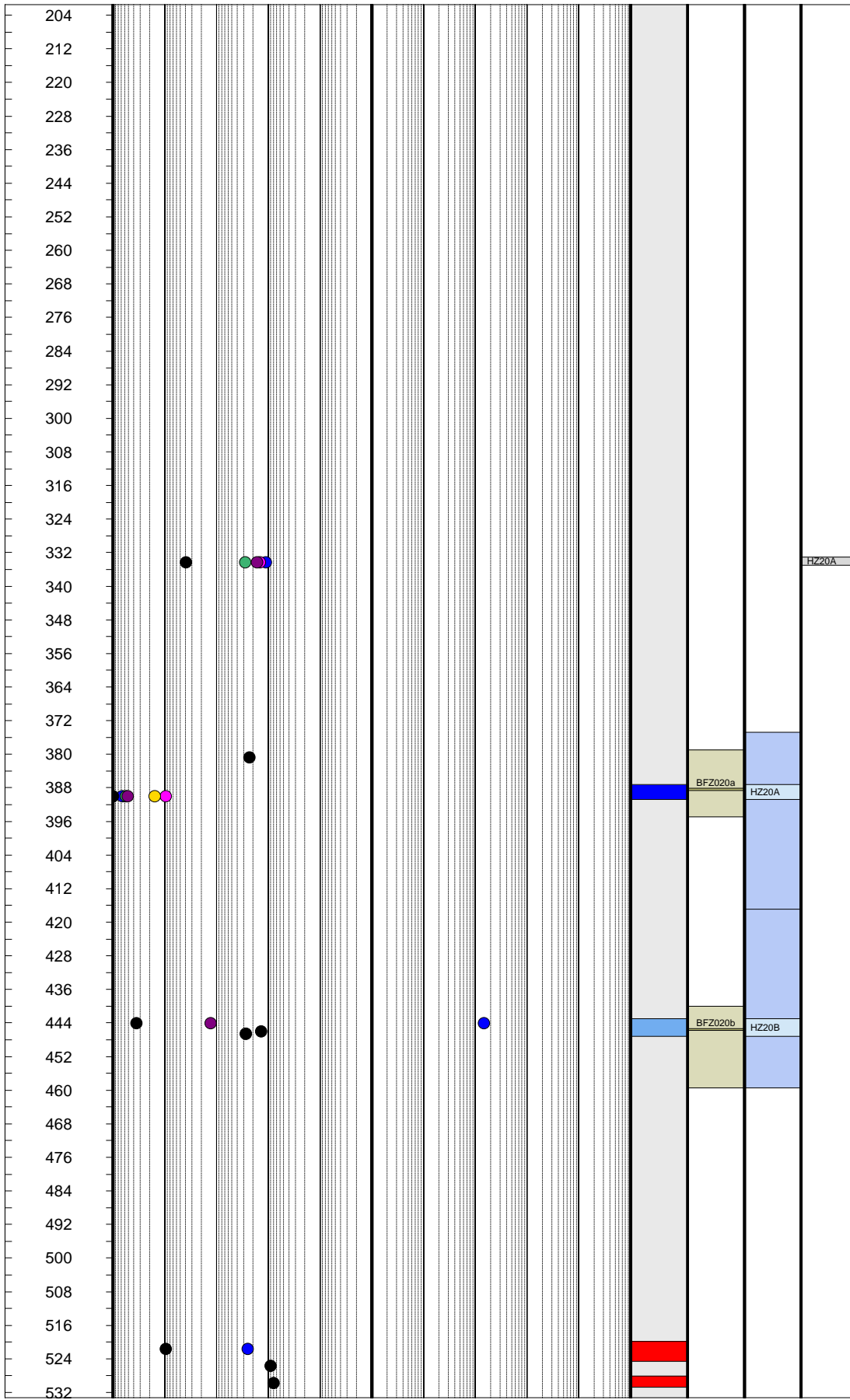
**Section type:** ■ Intact rock ■ Crushed ■ Hyd. & Crushed  
 ■ Hydraulic feature ■ Hyd. & Fract.

**BFM v. 3.0:** ■ BFZ Influence zone ■ BFZ Repository scale ■ BFZ Site scale

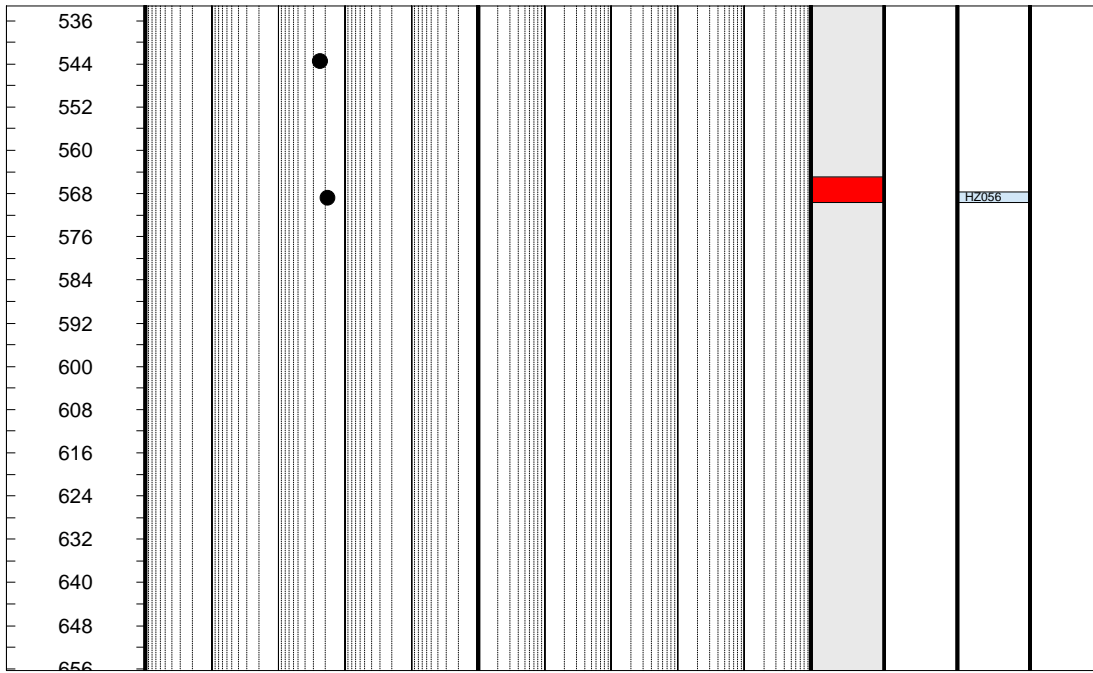
**HZ-2015:** ■ HZ Influence zone ■ HZ Site scale ■ HZ Repository scale

**Flow rates:** ● 01-03/2004 (2005-52)  
 ● 06/2004 (2005-52)  
 ● 12/2005 (2006-39)  
 ● 06/2006 (2008-16)  
 ● 06/2007 (2008-40)  
 ● 05-06/2007 (2008-40)  
 ● 11/2017 (2018-xx)











- casing
- casing B
  
- Section type:**
  - Intact rock
  - Hydraulic feature
  - Fracture zone
  - Crushed
  
- BFM v. 3.0:**
  - BFZ Influence zone
  - BFZ Repository scale
  - BFZ Site scale
  
- HZ-2015:**
  - HZ Site scale
  - HZ Repository scale
  
- Flow rates:**
  - B: 09/2006 (2008-65)
  - 08-09/2006 (2008-65)
  - 01/2007 (2008-65)
  - 07/2011 (2013-09)
  - 05-06/2012 (2013-30)
  - 01/2017 (2018-xx)

