

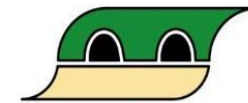
DOPAS Training Workshop 2015, 14 – 18 September 2015
The Josef Underground Research Centre
Faculty of Civil Engineering, Czech Technical University in Prague

The Josef gallery - Geology



Michal Roll

D2 6.2b



The research leading to these results has received funding from the European Union's European Atomic Energy Community's (Euratom) Seventh Framework Programme FP7/2007-2013, under Grant Agreement No. 323273 for the DOPAS project.



nagra



Svensk Kärnbränslehantering AB



Geographic position (1)

Příbram region =

Basement sediments

vs.

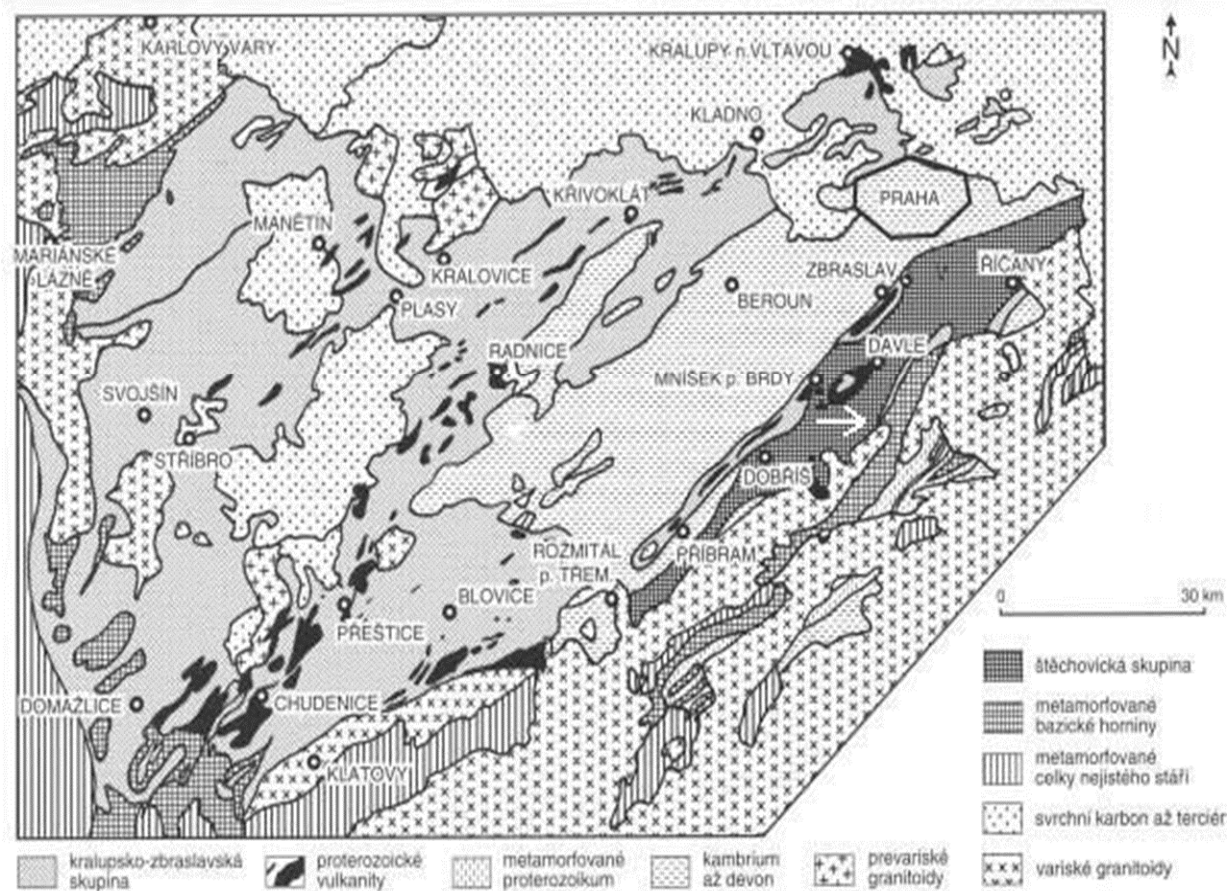
Central Bohemian plutonic complex



http://pruvodce.geol.cechy.sci.muni.cz/regionalni_geol/barrandien.htm

http://www.mcz-krbykamna.cz/cms.php?id_cms=6

Geographic position (2)

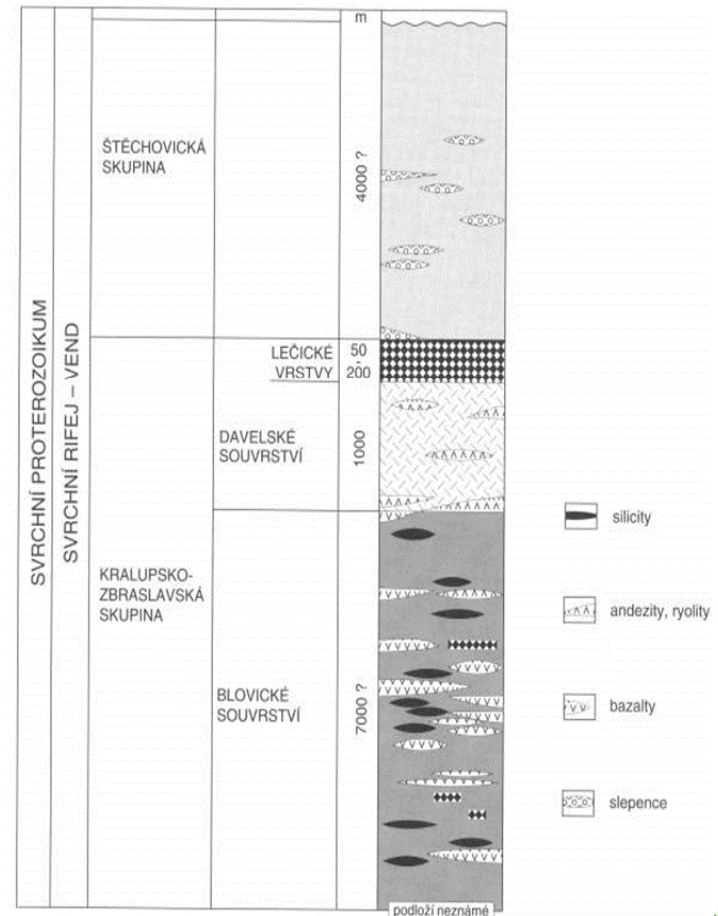


http://pruvodce.geol.cechy.sci.muni.cz/regionalni_geol/barrandien.htm

http://www.mcz-krbykamna.cz/cms.php?id_cms=6

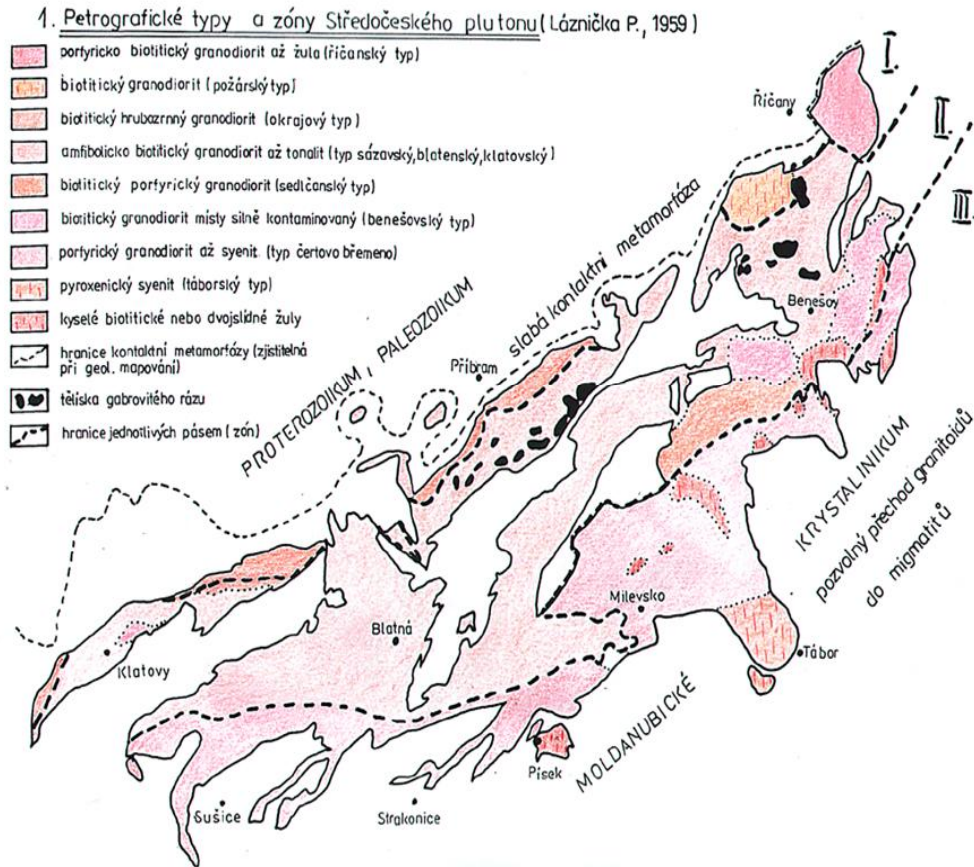
Jílové zone

- Ø Kralupsko-Zbraslavská group
- Ø Davle formation
- Ø Jílové zone
- Ø Direction SW-NE, in length ~ 70 km
- Ø Clay schists, siltstones, greywacke
- Ø Andesite, dacite, rhyolite and their pyroclastics
- Ø Age ~ 600 million years



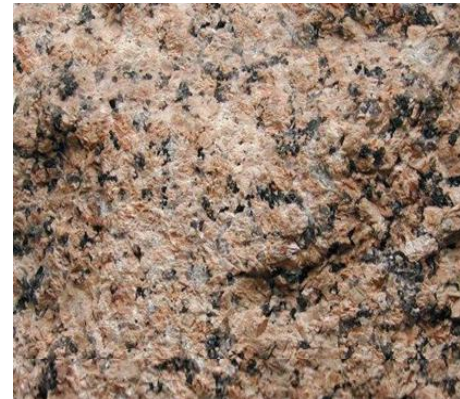
Central Bohemian plutonic complex

- Ø Complicated structure
- Ø X0 – X00 sectional plutons
- Ø Amphibol-biotitic granodiorite even tonalite
- Ø Age 350 – 330 million years



Vein-rock types

Albitic granite



Spessartite

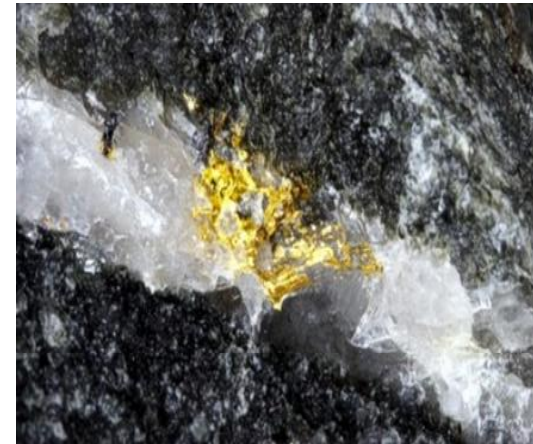


<http://www.geologie.uni-frankfurt.de/gesteine/Gesteine-Seiten/Bild27.html>

<http://petrol.sci.muni.cz/poznavanihornin/magmatity/alkalickozivcovygranit.htm>

Mineralogy

- Ø Deposits Čelina a Mokrsko
- Ø Au-mineralization and Scheelite mineralization
- Ø Mesothermal type, Q-veins, direction W-E.
- Ø Average grade 2 g/t, decreases with depth
- Ø Another ore minerals: pyrite, pyrrhotite, molybdenite, aurostibite and antimony
- Ø Another gangue minerals: calcite, baryte



<http://www.hofmann.estranky.cz/fotoalbum/mineraly/mineral-scheelit/scheelit-medoveho-zbarveni.html>

<http://www.muzeum-pribram.cz/cz/akce/detail/zlato-u-celiny/37/>

List of references

- Drahota J., (2010) Isotope composition of fluids extracted from fluid inclusions. Diploma thesis, Department of geochemistry, mineralogy and mineral resources, Charles University, Faculty of Science in Prague, 47 pages.
- Chlupáč I., Brzobohatý R., Kovanda J., Strávník Z., (2011) Geological past of Czech Republic, Academia, second edition, Prague, 436 pages.
- Morávek P. (1992) Gold in Bohemian Massif, Czech Geological Survey, 245 pages.



Thank you for your attention.



Conditions for use of this training material

- Material not originating from CTU under DOPAS project belongs to their respective owners.
- All uncredited images and graphics are of copyright CTU in Prague. They can be used under [CC BY-NC-SA](#) licence.
- The text and other information provided by CTU in this presentation are provided “As-is” under [CC BY-NC-SA](#) licence.

